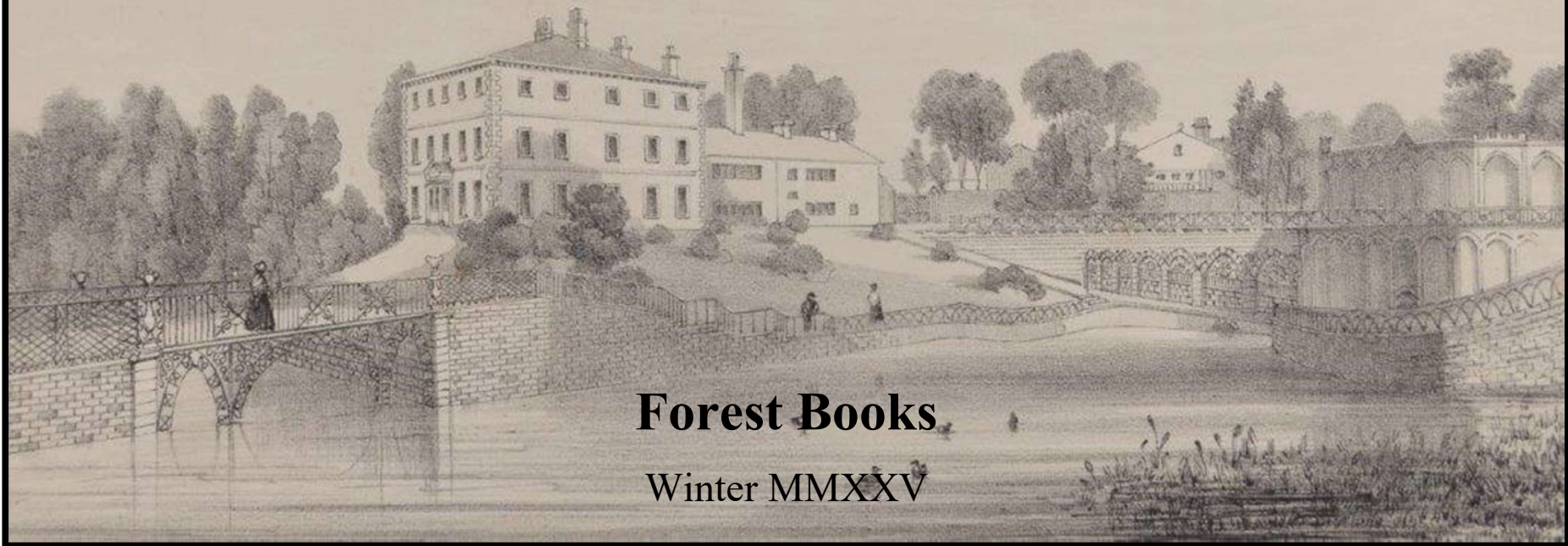


The Country House and Castle

Books from the library of Josceline Grove (with a few additions)



Forest Books

Winter MMXXV

Catalogue 118 – Part Three (S-Y)



The Josceline Grove Bookplate

www.forestbooks.co.uk ~ bib@forestbooks.co.uk ~ Tel: 01400 251865

The majority of the books in this catalogue hold the Josceline Grove bookplate as well as a typed catalogue description (many of which have been made use of in this catalogue) and acquisition note

100. **STAFFORDSHIRE. ALTON TOWERS.** Catalogue of the Magnificent Contents of Alton Towers, the Princely Seat of the Earl of Shrewsbury, which (by Order of the Executors of the Late Right Hon. Bertram Arthur, Earl of Shrewsbury) Will be Sold by Auction, by Messrs. Christie & Manson, at the Towers, on Monday, July 6, 1857, and Twenty-Nine Following Days. [*Printed by W. Clowes and Sons*]. 1857. **£145.00**

Large 8vo (243 x 147 mm), iv, 219, [1]pp., the first thirteen days of the sale (1636 lots) with prices and buyers names' supplied in the neat contemporary hand, front inner hinge slightly shaken, orig. red embossed cloth, head and foot of spine light chipped otherwise a very good copy.

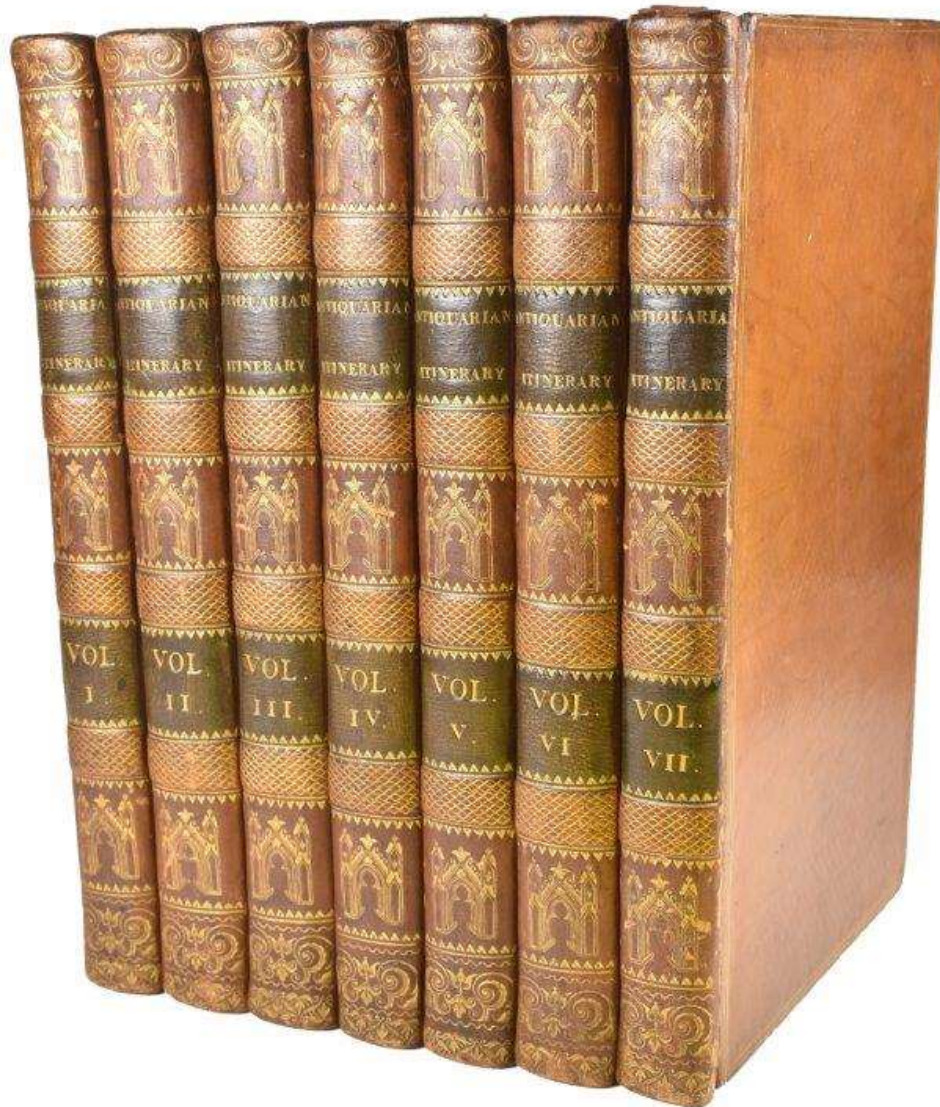
Catalogue of the entire contents of Alton Towers other than the library, which was sold in two separate auctions in 1857 and 1858. This was one of the major art sales of the nineteenth century, nearly 4000 lots fetched the princely sum of £42,198. Loosely inserted is a 32 page illustrated pamphlet "John Heywood's Illustrated Guide to Alton Towers, Rudyard and Leek", c. 1900.

Holmes, p.20.

101. **STAFFORDSHIRE. NIVEN (William)** Illustrations of Old Staffordshire Houses. *London: Printed for the Author at the Chiswick Press, 1882.* **£50.00**

First edition, 4to (320 x 250 mm), [8], 32pp., with a list of subscribers at the end, 21 copper etchings by the author with descriptive notes, unfortunately the gutta percha binding has failed with leaves becoming loose, original brown publishers cloth, gilt.

Holmes, p.8; Cooper I, 64.



CATHEDRAL BINDING

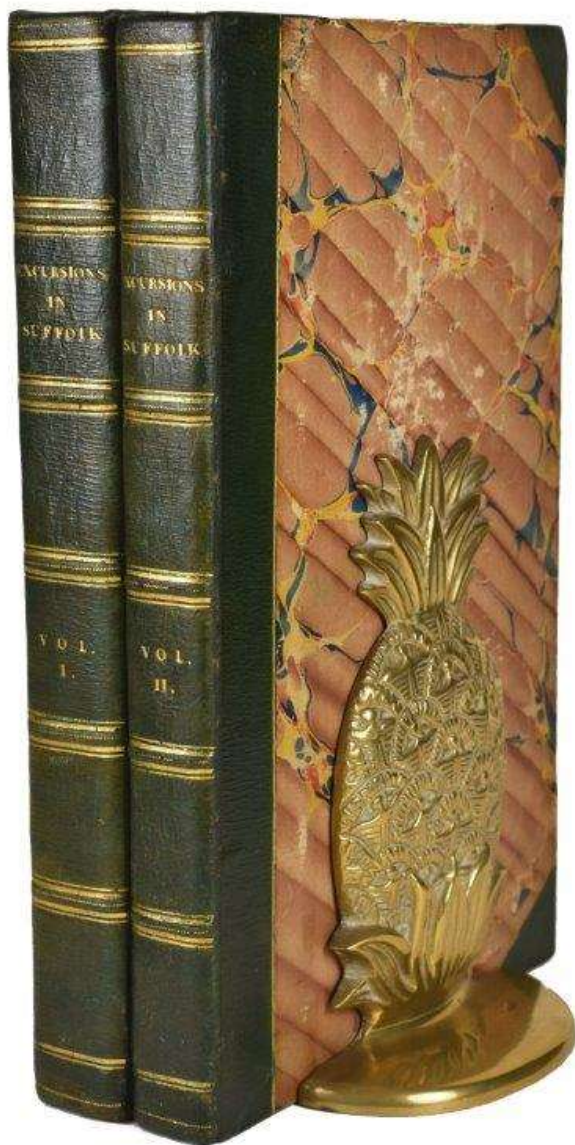
102. [STORER (James Sargent)] *The Antiquarian Itinerary, Comprising Specimens of Architecture, Monastic, Castellated, and Domestic; With other Vestiges of Antiquity in Great Britain. Accompanied with Descriptions. London: Published for the Proprietors, By Wm. Clarke... 1815-17. £495.00*

First edition, 7 vols., royal 8vo (217 x 134 mm), [104]; [104]; [104], [102], [102]; [102], [118]pp., 336 engraved plates, 48 plates in each volume, 164 wood-engraved illustrations, some occasional light spotting, marbled endpapers, contemporary diced calf cathedral binding, spines tooled with elaborate gothic arches, cross-hatched bands, green morocco lettering-pieces, a very attractive set.

Provenance: Early ink signature of J. Howe, Knowle.

Produced as a sequel to similar publications by the engravers J. S. Storer and John Greig, the intention was to provide engraved visual images of mediaeval and later buildings (castles being well represented) not illustrated, or not satisfactorily illustrated, in earlier publications, with accompanying text.

BAL, 114.



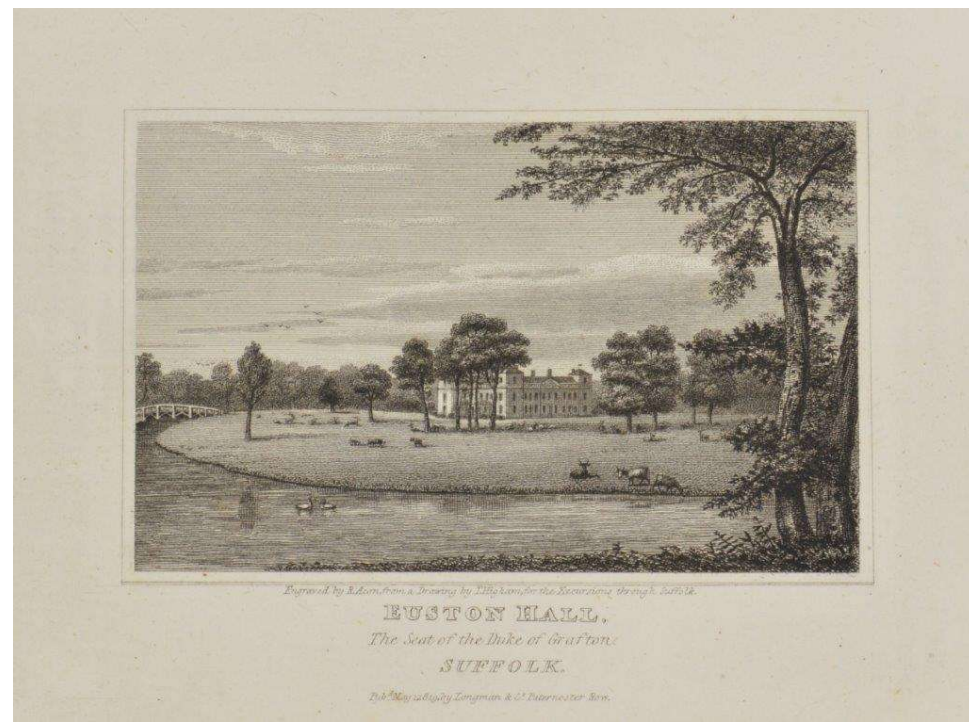
103. **SUFFOLK. [CROMWELL (Thomas Kitson)]** Excursions in the County of Suffolk: comprising a brief historical and topographical delineation of every town and village : together with descriptions of the residences of the nobility and gentry, remains of antiquity, and every other interesting object of curiosity : forming a complete guide for the traveller and tourist. *London: Printed for Longman, Hurst, Rees, Orme, and Brown, 1818-19.* **£225.00**

First edition, 2 vols., royal 8vo (223 x 140 mm), large paper copy, [2], v, [1], 200; [6], 176pp., additional engraved title page to both volumes, with engraved folding map of the county and one of the town of Ipswich, 96 engraved plates as called for, some intermittent light spotting, marbled endpapers, nicely bound in contemporary green half calf, marbled boards, untrimmed, t.e.g.

Provenance: Bookplate of Sir Charles Henry Stuart, Baronet Rich (1859-1921).

"excellent for the engravings which illustrate many country houses."—Cooper.

Holmes, p.5; Cooper I, 30.



VIEWS
OF
THE SEATS
OF THE
NOBLEMEN AND GENTLEMEN
IN
SUFFOLK.
FROM DRAWINGS
BY
HENRY DAVY,
AUTHOR OF THE ARCHITECTURAL ANTIQUITIES OF SUFFOLK.
PART FIRST.
PUBLISHED BY THE AUTHOR, SOUTHWOLD.
MDCCLXXVII.

ONE OF 65 LARGE PAPER COPIES

104. **SUFFOLK. DAVY (Henry)** Views of the Seats of the Noblemen and Gentlemen in Suffolk. From Drawings by Henry Davy. Part First [all published]. *Southwold: Published by the Author, 1827. £395.00*

First edition, 4to (320 x 250 mm), [44]pp., without the list of subscribers, one of 65 large paper copies, 20 steel engraved plates from drawings by the author, each accompanied by a leaf of descriptive text, light water-staining to upper inner blank margin of some plates, text foxed and with offsetting from plates, occasional marginal spotting, original printed wrappers bound-in, contemporary boards, rebacked and recorned in crimson morocco, spine gilt.

Provenance: Neat contemporary ink ownership stamp with crest of F. W. Campbell of Birkfield, Ipswich to front free endpaper (repeated on upper cover with signature), later bookplate of James Mason Martin.

The DNB describes the author as a practising architect whose

works are unknown; he is not listed in Colvin. Originally intended to be issued in in 2 parts consisting of forty plates, but due to the cost of the publication not having been properly calculated the present "first part", issued in four numbers of five plates each, was all that ever appeared. The copies subscribed for numbered 170, of which thirty-five were with plates in india-paper proof, and some sixty-five were to be issued in quarto format, as the present copy (the remainder of the edition was to be octavo); it is not necessarily the case that all these copies were distributed, and the book is certainly rare, especially large paper copies.

Cooper I, 22.



LARGE PAPER COPY

105. **SUFFOLK. GAGE (John)** *The History and Antiquities of Hengrave, in Suffolk.* London: Printed by J. F. Dove, 1822.
£165.00

First edition, folio (395 x 270 mm), vii, [1], 263pp., 29 of 30 engraved plates and tables (the missing plate is that of the author's father), some light browning to plates, contemporary half calf, rebacked, untrimmed.

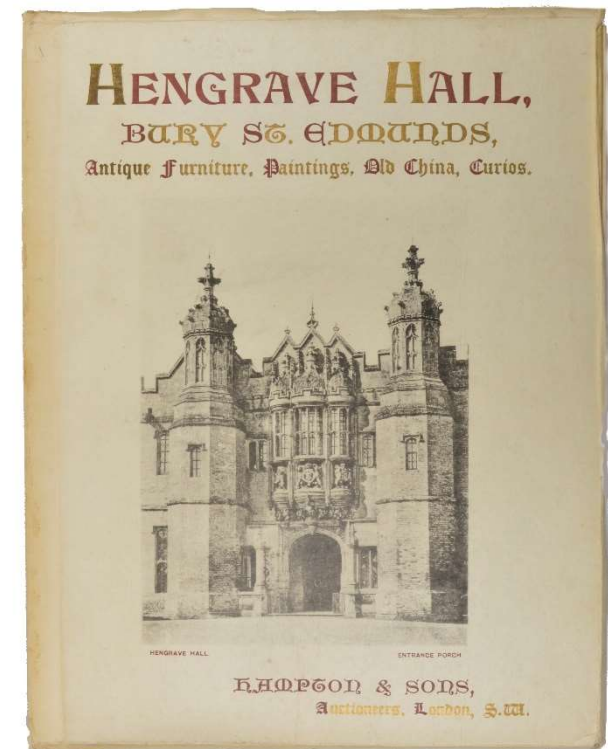
Learned account of this great house of the Kytsons which went by decent to a cadet branch of the Gage family of Firlie in Sussex. The contents were sold in 1897 when it was bought by Sir John Wood who made some effort to restore the interior to its original appearance before the alterations of the eighteenth-century.

Holmes, 131; Cooper II, p.136.

106. **SUFFOLK. HENGRAGE HALL.** A Catalogue of the Interesting and Historical Contents of Hengrave Hall, Bury St. Edmunds. Collected during two centuries by members of the Kytson and Gage families... for sale by auction on Thursday, the 5th August, 1897, and seven following days.
London: Hampton & Sons, Auctioneers, [1897.] **£50.00**

4to (274 x 210 mm), 134pp., frontispiece and 6 plates, staples rusted causing frontis., to become loose, with two A.L.s from the auctioneers to the recipient of the catalogue, orig. printed wrappers with chapped edges, 1914 lots.

Hengrave Hall, a substantial Tudor house in Suffolk initially owned by the Kytson family, passed into the possession of the Gage family by marriage in the early seventeenth century, and remained in Gage family ownership until the death of the widow of the last baronet in 1887. The present handsomely produced auction catalogue provides an excellent record of the Gage family's inherited possessions.



107. **SUFFOLK. WATERHOUSE (Ellis)** The Collection of Pictures in Helmingham Hall. *Lord Tollemache: Helmingham Hall, 1958.* **£45.00**

First edition, 4to (280 x 220 mm), 64pp., limited to 150 copies privately printed, this being an unnumbered review copy, illustrated, orig. publishers blue buckram with title stamped in gilt on upper cover.

The best of the collection was sold to pay death duties in the 1950s, this is mostly a record of an extensive collection of portraits of the Tollemache family. Holmes, p.130.

108. **SUSSEX. ARNOLD (Rev. F. H.)** Petworth: a Sketch of its History and Antiquities, with notices of objects of archaeological interest in its vicinity. *Petworth: A. J. Bryant, 1864.* **£50.00**

First edition, 8vo (185 x 120 mm), 6, [7]-114, [1]pp., frontispiece, 4 plates, orig. publishers blue embossed cloth, upper cover lettered in gilt.

Holmes, p.205; Cooper II, p.184-85.

UNRECORDED

109. **SUSSEX. BARHAM HOUSE.** Barham House Record. 1894-5. No. I Christmas 1894 - No. III. Summer 1895. *St. Leonards-on-Sea: Barham House, 1894-95.* **£95.00**

12mo (160 x 105 mm), three issues in one, [2], 50pp., frontispiece of the house and 2 further plates, contemporary vellum, spine lettered in gilt.

Provenance: With the bookplate of William Talbot Suttbery (the headmaster).

Barham House, St. Leonards-on-Sea was used as a preparatory school for young men under the tutelage of William T. Suttbery, C. T. Marcon and F. H. Wheeler. This quarterly Gazette, described as being "the smallest circulation in the World", reports mostly on the schools sporting activities, such as the Football, Cricket and Racquets. The school had closed by 1901 and the house was put up for auction.

No other copy recorded.

ONE OF 125 DE-LUXE ILLUSTRATED COPIES

110. **SUSSEX. BENSON (Robert and Evelyn)**
Catalogue of Italian Pictures at 16, South Street,
Park Lane, London and Buckhurst in Sussex.
Collected by Robert and Evelyn Benson. *London:*
Privately Printed at the Chiswick Press, 1914.


£495.00

First edition, 4to (270 x 220 mm), xxvi, 229, [1]pp., this being one of 125 de-luxe illustrated copies, printed on handmade paper, frontispiece, 83 tissue guarded plates printed by Adolphe Braun et Cie., Emery Walker and Frederick Hollyer using the photogravure method, original quarter vellum, decorated paper boards, uncut, top edge gilt.

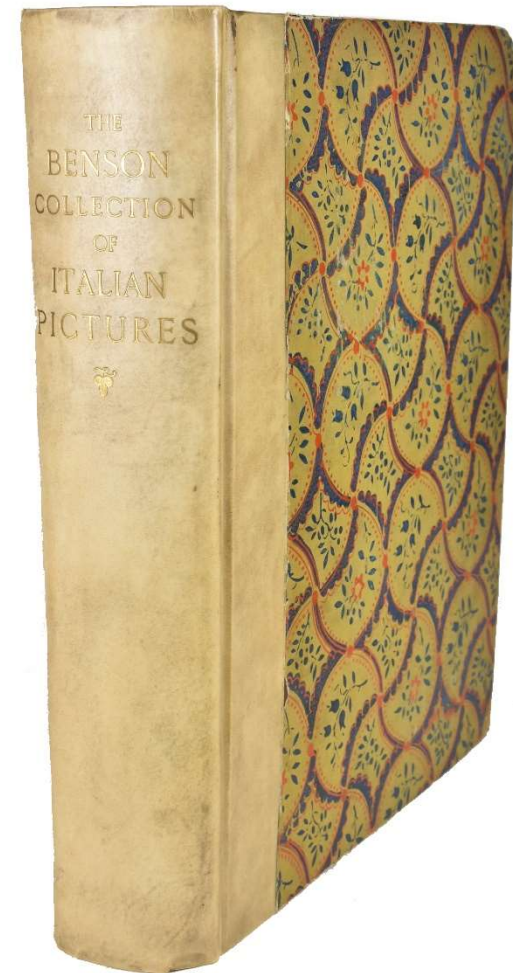
Provenance: Presentation inscription from Robert & Evelyn Benson to Sidney & Delia Peel, 1915, with their respective armorial bookplates.

A handsomely produced privately printed catalogue of 114 Italian pictures in the collection of the Benson's. "Despite the publication of his catalogue, Benson's collection is not well known today, probably because it was never the subject of a spectacular auction sale. [Joseph] Duveen bought the entire collection in 1927 and sold most of it to his American customers. Today Benson's pictures are dispersed across many leading museums in North America."—Stourton & Sebag-Montefiore.

Stourton & Sebag-Montefiore, *The British as Art Collectors*, pp. 252-53.

CATALOGUE
OF
ITALIAN PICTURES
AT
16, SOUTH STREET, PARK LANE,
LONDON
AND
BUCKHURST IN SUSSEX
COLLECTED BY
ROBERT AND EVELYN BENSON

SIBI ET AMICIS

LONDON
PRIVATELY PRINTED AT THE CHISWICK PRESS
1914



THE
ANTIQUITIES

OF
ARUNDEL;

THE
Peculiar Privilege of its CASTLE and
LORDSHIP;

WITH AN
ABSTRACT OF THE LIVES
OF THE
EARLS of ARUNDEL,
From the Conquest to this Time.

By the MASTER of the Grammar-School
at ARUNDEL.

Cui genus a proavis ingens, clarumque paternæ
Nomen erat virtutis. VIRGIL. ÆNEID. Lib. xii.
Hail names rever'd! which time and truth proclaim
The first and fairest in the list of fame.
Kings, statesmen, patriots thus to glory rise;
On virtue grows their fame, or soon it dies;
But grafted on the vigorous stock, 'tis seen
Brighten'd by age, and springs in endless green:
'Tis virtue only that shall grow with time,
Live thro' each age, and spread thro' every clime.
Honour, a poem, by the Rev. Mr. BROWN.

LONDON:

Printed for the Author; and sold by G. ROBINSON and J.
ROBERTS, Paternoster-Row; Mr. VERRAL, at Lewes; Mr.
HUMPHREY, Chichester; and Mr. WHITE, Arundel.
MDCCLXVI.

111. SUSSEX. [CARRACIOLI (Charles)] The Antiquities of Arundel; The Peculiar Privilege of Its Castle and Lordship; With an Abstract of the Lives of the Earls of Arundel, From the Conquest to This Time. *London: Printed for the Author, 1766.*

£195.00

First edition, 8vo (206 x 125 mm), [8], 276, [4, list of subscribers]pp., contemporary calf, rubbed, joints cracked, upper board holding by cords, spine label chipped.

Only edition of this history of the Earls of Arundel, in particular the Fitzalan and Howard families. Although the volume focuses on the occupants of the castle rather than its fabric, the author devotes many pages to the achievements of Thomas Howard, 14th Earl of Arundel (1588-1646), an antiquary and avid collector who acquired such treasures as the Arundel Marbles, which are described in some detail.

112. SUSSEX. COTTON (William) A Graphic and Historical Sketch of Bodyam Castle, in Sussex. *London: Printed by and for Samuel Bentley, 1838.*

£85.00

Second edition, small 4to (280 x 185 mm), 55, [3]pp., 4 lithographed plates by Hullmandel, one pedigree and one engraved plan, vignettes to the text, orig. cloth, MS. spine label, head and foot lightly chipped.

Written with an eye to readers interested in mediaeval chivalry, but based on a careful inspection of the castle itself.

A
GRAPHIC AND HISTORICAL
SKETCH

OF
Bodyam Castle,

IN
SUSSEX,

BY
WILLIAM COTTON, ESQ. M.A.

LONDON:
PRINTED BY AND FOR
SAMUEL BENTLEY, DORSET STREET.

UNRECORDED

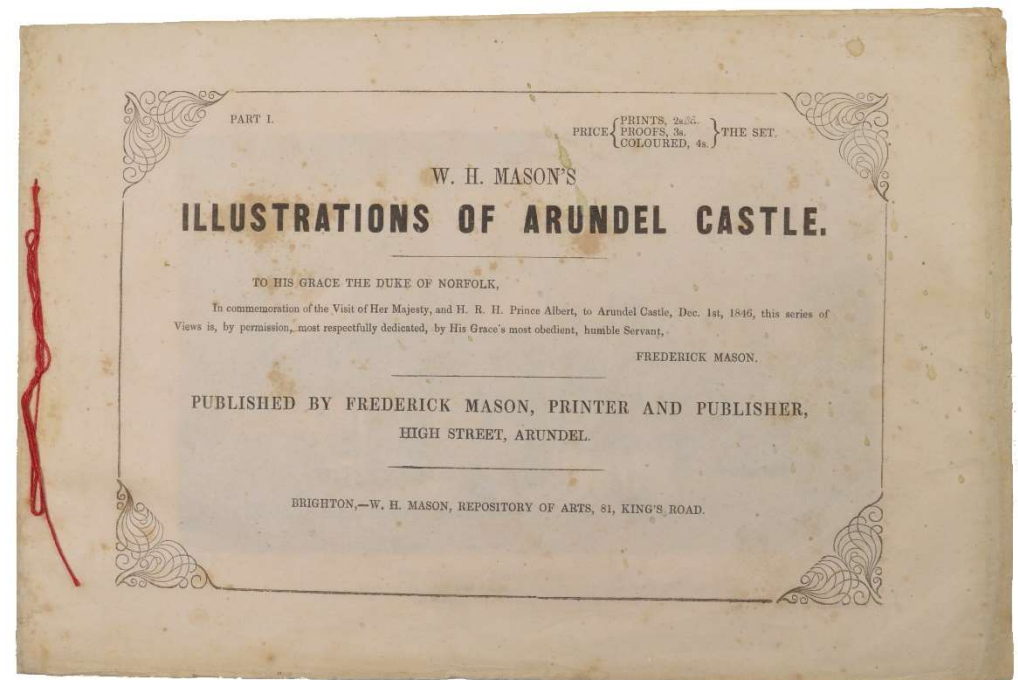
113. **SUSSEX. [MASON (W. H.)]** W. H. Mason's Illustrations of Arundel Castle. In Commemoration of the Visit of Her Majesty and H.R.H. Prince Albert to Arundel Castle; Dec. 1st 1846. *Brighton: W. H. Mason, [1846.]* **£295.00**

First edition, oblong 4to (193 x 290 mm), part I [all published], 4 tinted lithographed plates by W. H. Mason after drawings by F., G., and H. Earp, minor marginal spotting, original printed wrappers, resewn, preserved in a modern cloth folder and attractive morocco-backed slip-case, gilt-stamped morocco label to upper cover.

Apparently unrecorded views of Arundel Castle before the later major restructuring, each plate fully captioned and with publishers line.



ARUNDEL CASTLE.
(From the Meadows)
Published by Frederick Mason, Dec. 1st 1846, High St. Arundel.



114. **SUSSEX. ST. JOHN HOPE (Sir William H.)** Cowdray and Easebourne Priory in the County of Sussex. *London: Printed at the Offices of Country Life, 1919.* **£110.00**

First edition, folio (365 x 250 mm), xiv, 144pp., one of 400 numbered copies, coloured frontis., 53 plates, orig. half vellum, deckled edges, some light browning to spine otherwise a very nice copy.

Holmes, p.80.

115. **SUSSEX. TIERNEY (Rev. M. A.)** The History and Antiquities of the Castle and Town of Arundel; Including the Biography of its Earls, from the Conquest to the Present Time. *London: G. and Nicol, 1834.* **£175.00**

First edition, 2 vols., royal 8vo (240 x 150 mm), xii, [2], 350; [2], 351-772pp., engraved frontis., and 7 plates on India paper, 5 folding pedigrees and 14 vignettes, neat oval stamp to title-pages, contemporary half half, spine labels lettered in gilt, marbled endpapers and edges, a very nice set.

Holmes, p.24.

116. **SUSSEX. WRIGHT (Charles)** The Antiquities and Description of Arundel Castle, Sussex, a Biographical Sketch of the Lives of the Earls of Arundel, and Dukes of Norfolk, from the year 987 to 1817, with an Account of the Arundelian Marbles. *Brighton: Printed for the Author, by J. Forbes, 1817.* **£75.00**

First edition, small 8vo (190 x 105 mm), [4], 140, [2]pp., two woodcut vignettes, text a little ragged with closed tears to two leaves repaired with archival paper, with inscriptions and manuscript notes by a previous owner John Grant of Arundel who presumably bought it new, recent half red morocco, spine tooled in gilt, uncut.

Holmes, p.24; Cooper II, pp.9-10.

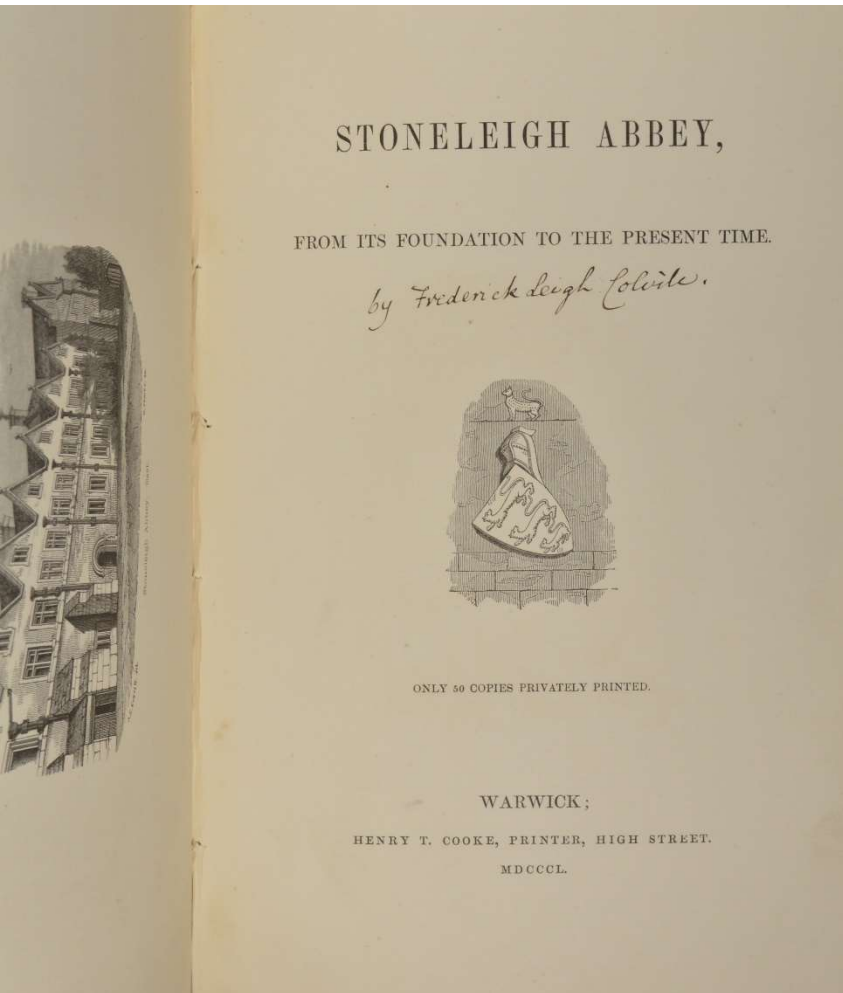


THE PICTURE GALLERY, PENSHURST PLACE (looking west).

117. **THOMPSON (Stephen)** *Old English Homes: A Summer's Sketch-Book*. London: Sampson Low, Marston, Low and Searle, 1876. **£125.00**

First edition, 4to, 215, [1]pp., 24 Woodbury-type photographs mounted on card stock, front inner hinge shaken with gutter margin of endpaper torn, contemporary half calf, spine gilt, upper hinge cracked.

Contemporary photographs and descriptions of Ightham Mote, Hever, Penshurst, Knole, Hamden House and Stoke Poges Church.



ONLY 50 COPIES PRIVATELY PRINTED

118. **WARWICKSHIRE.** [COLVILLE (Frederick Leigh)] Stoneleigh Abbey, from its Foundation to the Present Time. *Warwick: Privately Printed by Henry T. Cooke, 1850. £185.00*

First edition, 4to (275 x 175 mm), [4], 52, [2]pp., one of 50 copies privately printed, signed by the author on title page and a note in his hand at rear endpaper, woodcut frontispiece, 1 chromolitho plate illustrating encaustic tiles, 2 double-page printed genealogical tables, numerous woodcut illustrations, orig. red embossed cloth, spine lettered in gilt, a couple of small nicks to spine.

Provenance: Armorial bookplate of Colville impaling Leigh and modern plate of Bryan Hall with a related note regarding the author in his hand.

A rare monograph/guide book devoted Stoneleigh Abbey, Warwickshire, a mediaeval Cistercian monastery converted into a country house and principal residence of the Leigh family, Lords Leigh. The author, Rev. Frederick Leigh Colville (1819-1886), Vicar of Leek Wooton, Warwickshire, and Domestic Chaplain to the then Lord Leigh.

Not in Holmes or Cooper; JISC locating copies at BL and Cambridge.

119. **WARWICKSHIRE. DAVIDSON (Alfred)** A History of the Holtes of Aston, Baronets; With a Description of the Family Mansion, Aston Hall, Warwickshire. *Birmingham: E. Everitt, 1854.* **£175.00**

First edition, large 4to (370 x 270), 76pp., lithographed portrait frontispiece (tidemark to blank fore-edge), small nick to blank margin of title, 4 full-page coloured lithographs by Allen E. Everitt, orig. red grained cloth, neatly reback in red morocco gilt, title and coat of arms stamped in gilt on upper cover.

Aston Hall was one of the last great houses to be built in the Jacobean style and boasts elaborate plaster work ceilings and friezes, a magnificent carved oak staircase and a spectacular 136 foot Long Gallery. During the seventeenth and eighteenth centuries further work was carried out by successive members of the Holte family, but the ornate and highly distinctive character of the building was left untouched.

Holmes, p.26; Cooper II, pp.11-12; Abbey, *Scenery*, 407.

120. **WARWICKSHIRE. GRIFFIN (Charles)** Stoneleigh Abbey, Thirty Four Years Ago, Containing a Short History of the Claims to the Peerage and Estates, and a Catalogue of the Confessed and Suspected Crimes, &c. *Birmingham: Printed by R. J. Salter for Charles Griffin, [1848].* **£38.00**

First edition, 12mo (160 x 105 mm), vi, [7]-90, [2]pp., pages 31-54 with brown staining to upper-outer corner, front inner hinge broken, original publishers green embossed cloth.

Sets out a case for an heir to the Abbey and estates after the last descendant of the main branch of the family the 5th and last Baron Leigh of Stoneleigh, who had died insane in 1786 when his titles expired.

ILLUSTRATED WITH MOUNTED ALBUMEN PHOTOGRAPHS

121. **WARWICKSHIRE. KNOWLES (The Rev. E. H.)** *The Castle of Kenilworth, A Hand-Book for Visitors.* *Warwick: Henry T. Cooke and Son, 1872.* **£195.00**

First edition, 4to (310 x 250 mm), [12], 240pp., photographic frontispiece, photographic vignette to title page and an additional 22 mounted albumen photographs, 4 lithographed plans, front inner hinge a little tender, orig. publishers brick red pebbled cloth, blocked in gilt, speckled white staining to boards, all edges gilt.

Gernsheim, 545.



ILLUSTRATIONS
OF
OLD WARWICKSHIRE HOUSES

By *W. NIVEN* Architect
Author of *Old Worcestershire Houses* &c.

31 Copper Enchings
With Descriptive Notes



By the Author, Secretary to the Society of Antiquaries, &c.

"Budding royalty
Their Maxims are certainly"

LONDON

PRINTED FOR THE AUTHOR
At the Chiswick Press, Book Court, Chancery Lane
1878

PRIVATELY PRINTED, PRESENTATION INSCRIPTION

122. **WARWICKSHIRE.** [LEIGH (Miss Agnes E.)] Stoneleigh Abbey Pictures [Collection of Lord Leigh]. [London: Privately Printed by Hazell, Watson & Viney, Ltd. 1919]. **£50.00**

8vo (216 x 133 mm), [2], 31, [1]pp., presentation inscription from the author to Winifred Leigh, July 1920, orig. red cloth, a little faded with a few water splash stains, title in gilt on upper cover, a.e.g.

The author (1853-1942) was the second daughter of the 2nd Lord Leigh of Stoneleigh and refers to her experiences of life in the Abbey while it was still occupied by the family. She dedicates this copy to her cousin by marriage, the widow of Major Chandos Leigh.

123. **WARWICKSHIRE.** NIVEN (William) Illustrations of Old Warwickshire Houses. London: Printed for the Author at the Chiswick Press, 1878. **£50.00**

First edition, 4to (320 x 250 mm), [10], 37, [3]pp., with a list of subscribers at the end, title with vignette, 31 copper engravings by the author with descriptive notes, unfortunately the gutta percha binding has failed with leaves becoming loose, original brown publishers cloth, gilt.

Holmes, p.8; Cooper I, 65.

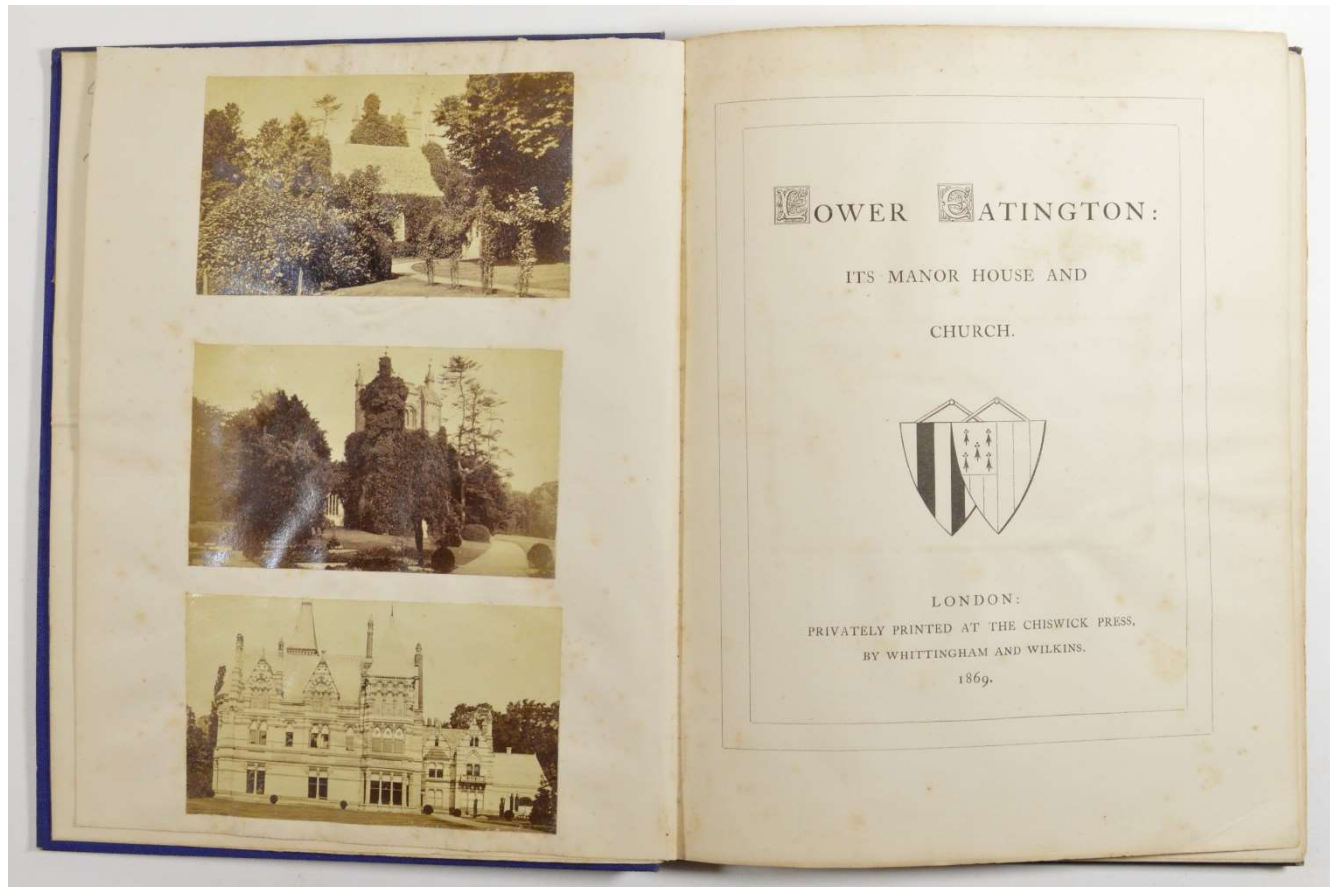
PRIVATELY PRINTED, EXTRA-ILLUSTRATED

124. **WARWICKSHIRE. [SHIRLEY (Evelyn Philip)]** Lower Eatington: Its Manor House and Church. *London: Privately Printed at the Chiswick Press, by Whittingham and Wilkins, 1869. £195.00*

First edition, small 4to (218 x 168 mm), 73, [3]pp., presentation inscription "W.W. Wynne, from his dear old friend Evelyn Philip Shirley, 1869", extra-illustrated with 8 tipped-in original photographs of family members (one of the author and signed by him) and of the House, orig. blue publishers cloth, gilt stamped armorial on upper cover.

Shirley also produced a book about his other seat, Lough Fea, near Carrickmacross, Co. Monaghan, Ireland.

Holmes, p.168; Cooper II, p.171.



125. **WARWICKSHIRE. TWAMLEY (Charles)** History of Dudley Castle and Priory, Including a Genealogical Account of the Families of Sutton and Ward. *London: John Russell Smith, 1867. £38.00*

First edition, small 8vo (189 x 120 mm), [2], iv, [2], 132pp., two fold-out genealogical pedigrees, orig. green publishers cloth, spine and upper cover lettered in gilt, some light white paint sprinkles on upper cover.

Less concerned with topography than with elucidating the family background of the Sutton family who confusingly changed their name to Dudley.

126. **WEAVER (Sir Lawrence) & PHILLIPS (R. Randal)** Small Country Houses of Today. *London: Country Life Limited., 1922-25. £195.00*

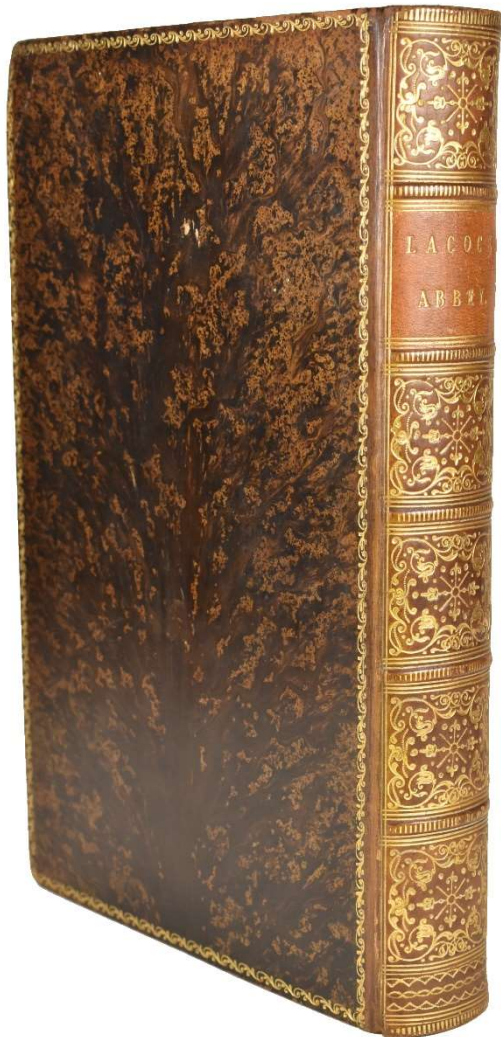
3 Vols., 4to, revised edition, xvi, 212pp., 265 illustrs.; xvi, 222pp., 297 illustrs.; xvi, 206, [2]pp., 270 illustrs., bookplate, orig. publishers green cloth, lettered in gilt, slight stain to rear cover of volume 3 otherwise a very nice set.

Series on smaller, mostly recently built houses, which were becoming much more popular after the war, intended to complement the monumental sequence of books being undertaken by Tipping and Hussey at the same time.

127. **WILTSHIRE. BOWLES (Rev. W. L.) & NICHOLS (John Gough)** Annals and Antiquities of Lacock Abbey, in the County of Wilts; With Memorials of the Foundress Ela Countess of Salisbury, & of the Earls of Salisbury of the Houses of Salisbury and Longespe, Notices of the Monasteries of Bradenstoke, Hinton, and Farley. *London: John Bowyer Nichols and Son, 1835. £75.00*

First edition, 8vo (242 x 152 mm), xvi, 374, lxxiii pp., engraved frontispiece view of Lacock Abbey and 13 further engraved plates, attractively bound in contemporary full tree calf, spint gilt extra with lettering piece, all edges gilt.

A detailed history of the Abbey and its owners in medieval times including Longespe, Earl of Salisbury, and his Countess Ela. The house is best known as the home of Fox Talbot, the inventor of photography.



128. **WILTSHIRE. BRITTON (John)** Graphical and Literary Illustrations of Fonthill Abbey, with Heraldical and Genealogical Notices of the Beckford Family. *London: Printed for the Author, 1823.* **£295.00**

First edition, 4to, (274 x 208 mm), viii, [5]-68, [4, list of subscribers], [4, adverts]pp., without half-title, engraved frontispiece, additional engraved title-page, 6 engraved plates and 2 coloured aquatints interiors (some browning and spotting), 9 genealogical tables, title vignette view of Fonthill, contemporary half calf, rubbed and worn.

Britton's book on William Blake's extravagant Gothic mansion, published almost contemporaneously with John Rutter's more celebrated Delineations of Fonthill, is illustrated by a series of accurate engraved plates from drawings by George Cattermole, Henry Shaw and others, and these are useful additions to the illustrations provided by Rutter. Britton's text is perhaps most interesting for the light it sheds on the book's publishing history and on Britton's own attitude to Beckford and to Fonthill.

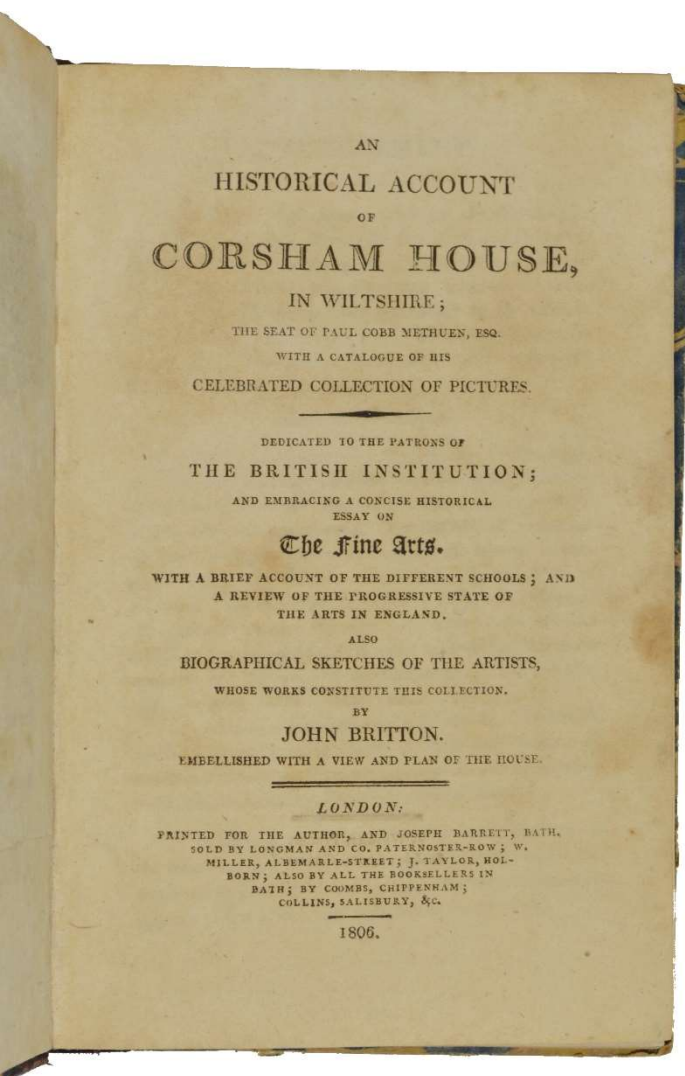
Holmes, p.104; Cooper II, pp. 93-94; BAL Cat. 416.

129. **WILTSHIRE. BRITTON (John)** An Historical Account of Corsham House, in Wiltshire; the seat of Paul Cobb Methuen, Esq. With a catalogue of his celebrated collection of pictures. Dedicated to the patrons of the British Institution, and embracing a concise historical essay on the fine arts. With a brief account of the different schools, and a review of the progressive state of the arts in England. Also biographical sketches of the artists, whose works constitute this collection. *London: Printed for the Author, 1806.* **£195.00**

First edition, small 8vo (183 x 117 mm), [4], 108pp., engraved frontispiece of the house and a ground plan, slightly browned and offset, early ink notations to front endpaper, nineteenth-century quarter calf, marbled boards, hand-written title label to spine a little chipped, housed in a handsome red quarter morocco slip-case, spine tooled in gilt.

One of Britton's earliest excursions into the fine arts field.

Holmes, p.78; Cooper II, P.76.

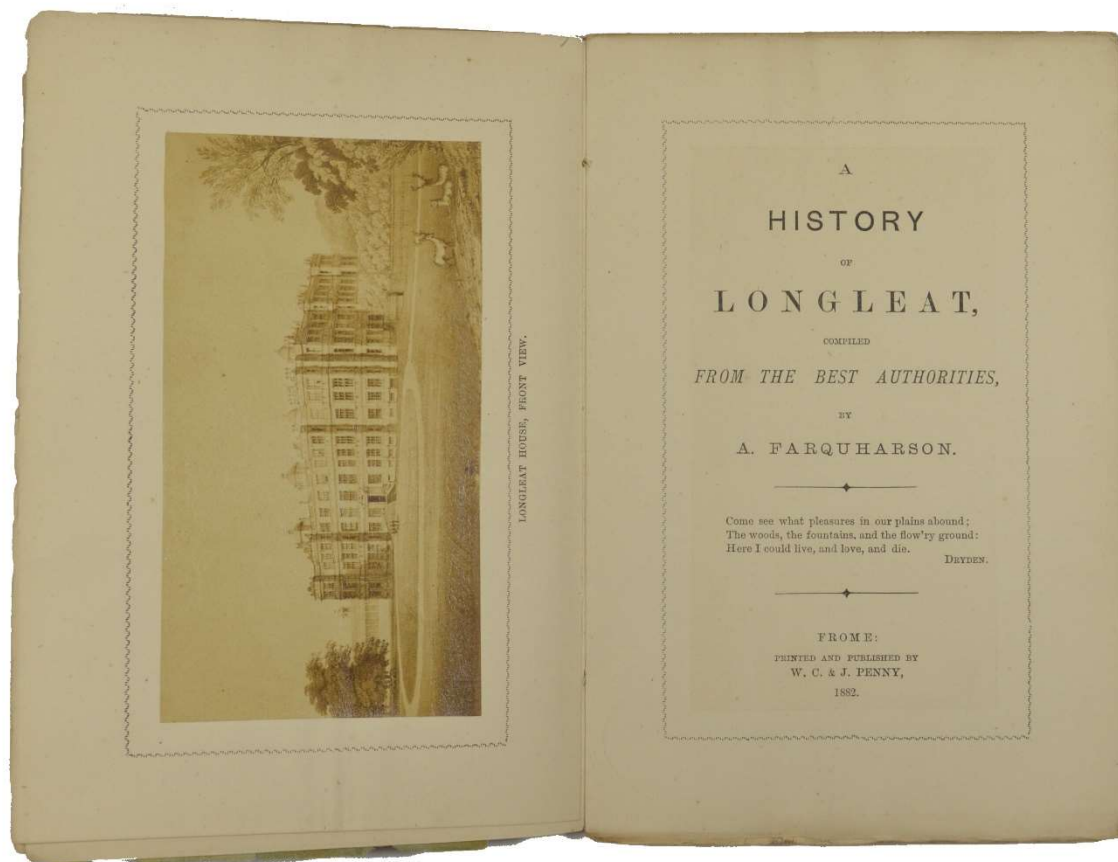


131. **WILTSHIRE. FARQUHARSON (A.)** A History of Longleat Compiled from the Best Authorities. *Frome: Printed and Published by W. C. & J. Penny, 1882.* **£145.00**

First edition, 8vo (190 x 130 mm), viii, 75, [1]pp., photographic frontispiece and 2 other photographic plates tipped in, orig. printed wrappers, slightly chipped, uncut, housed in a smart green morocco-backed slip-case, spine lettered in gilt direct.

Slip-case also contains: 1. MICHAEL (W.) Historical Associations of Longleat House, with an Engraving; Printed and Published by W. Michael, Bookseller. Westbury, 1873. 8pp., one engraved plate, orig. printed wrappers. 2. An 8 page article entitled "The History of Stourhead", with one engraved plate of Stourhead Tower.

Holmes, p.166 (Farquharson); Cooper II, pp. 170-71 (Michael).



132. **WILTSHIRE. FONTHILL ABBEY.** Historical Notices of Fonthill Abbey, Wiltshire. With Eleven Plates, and Fifteen other Embellishments. *London: Nichols and Son, 1836.* **£395.00**



First edition, 4to (282 x 220 mm), 52pp., engraved frontispiece and 10 engraved plates (light water tidemark to several plates), text illustrations, recent half red morocco, marbled boards, spine gilt with gilt lettered morocco label on upper cover.

A compilation on the celebrated Gothic mansion designed by the architect James Wyatt for the famous collector and social outcast William Beckford, put together by the publisher John Bowyer Nichols to provide a narrative history of the house from its conception to the collapse of its central tower in 1825. Nichols 'borrowed' chapters and descriptions from Britton and Rutter's works, reusing ten of the latter's engraved plates and reproducing one rather less well-known illustration from R. C. Hoare's *Modern Wiltshire* of 1829, showing the house after the disastrous collapse. He also provides a brief new narrative recording the break-up of the Fonthill estate after 1825.

Scarce, not in Holmes or Cooper.

133. **WILTSHIRE. JACKSON (Rev. J. E.)** The History of Longleat. *Devizes: Printed by H. Bull, 1857.* **£65.00**

First edition, 8vo (210 x 135 mm), 34pp., 3 plates, bound in later half red morocco, marbled boards, spine lettered in gilt direct.

The text of a paper read to the Wiltshire Archaeological Society at the house in the presence of the 4th Marquess. Jackson was a noted geologist and a founder member of the Wiltshire Archaeological and Natural History Society. Goes into the celebrated story of the murder of Tom O' Ten Thousand (Tynne) at the instigation of Court Konigsmark and also possibly by mistake for The Duke of Monmouth who was perhaps the assassin's real target.

134. **WILTSHIRE. KENNEDY (James)** A Description of the Antiquities and Curiosities in Wilton-House. Illustrated with twenty-five Engravings of some of the Capital Statues, Bustos and Relievos. In this Work are introduced the Anecdotes and Remarks of Thomas Earl of Pembroke, who collected these Antiques, now first published from his Lordship's MSS. *Salisbury: Printed by E. Easton, 1769.* **£475.00**

4to (285 x 225 mm), [8], xxxviii, 93 [i.e. 117]pp., p. 117 misnumbered 93, without half-title but with the list of subscribers, 25 engraved plates (some lightly spotted), cont. calf, early reback with original spine laid-down.

Provenance: Early ink signature of John Paddle.

This catalogue, based on Lord Pembroke's own notes, is mainly concerned with the important collection of classical sculpture at Wilton, but also lists the collection of paintings. The preface gives an account of Pembroke as collector and its explanation of the principles on which the collection of sculpture was formed is an interesting contribution to the theory of collecting.

Holmes, p.272; Cooper II, pp.260-1.

A
DESCRIPTION
OF THE
ANTIQUITIES AND CURIOSITIES
IN
WILTON-HOUSE.

Illustrated with twenty-five ENGRAVINGS of some of the Capital
STATUES, BUSTOS and RELIEVOS.

In this Work are introduced the Anecdotes and Remarks of
THOMAS EARL OF PEMBROKE, who collected these
Antiques, now first published from his Lordship's MSS.

— Sedibus altis
Augustâ gravitate sedent.

OVID.

BY JAMES KENNEDY.

SALISBURY: PRINTED BY E. EASTON,
AND SOLD BY R. HORSFIELD, LUDGATE-STREET;
J. BOYDELL, Cheapside; J. DODSLEY, Pall-Mall;
A. WEBLEY, Holborn; J. WALTER, Charing-Cross;
T. CADELL, the Strand; and J. ROBSON, New Bond-Street, London.

MDCCLXIX.
1769

PRIVATELY PRINTED

135. **WILTSHIRE. LONGFORD CASTLE.** Catalogue of Pictures at Longford Castle and Categorical List of Family Portraits. (Re-Numbered and arranged by H.M.R.). *Longford Castle: [Privately Printed], 1898.* **£48.00**

Second edition, 8vo (193 x 134 mm), 32pp., 2 plans (supplied in duplicate), original pink textured printed wrappers, slightly faded, uncut, housed in a smart red morocco-backed slip-case, spine lettered in gilt direct.

The collection contained over 290 pictures including works by Rubens, Teniers, Van Dyck, Poussin, Angelica Kauffman and Reynolds. This new edition has an historical preface and list of miniatures.

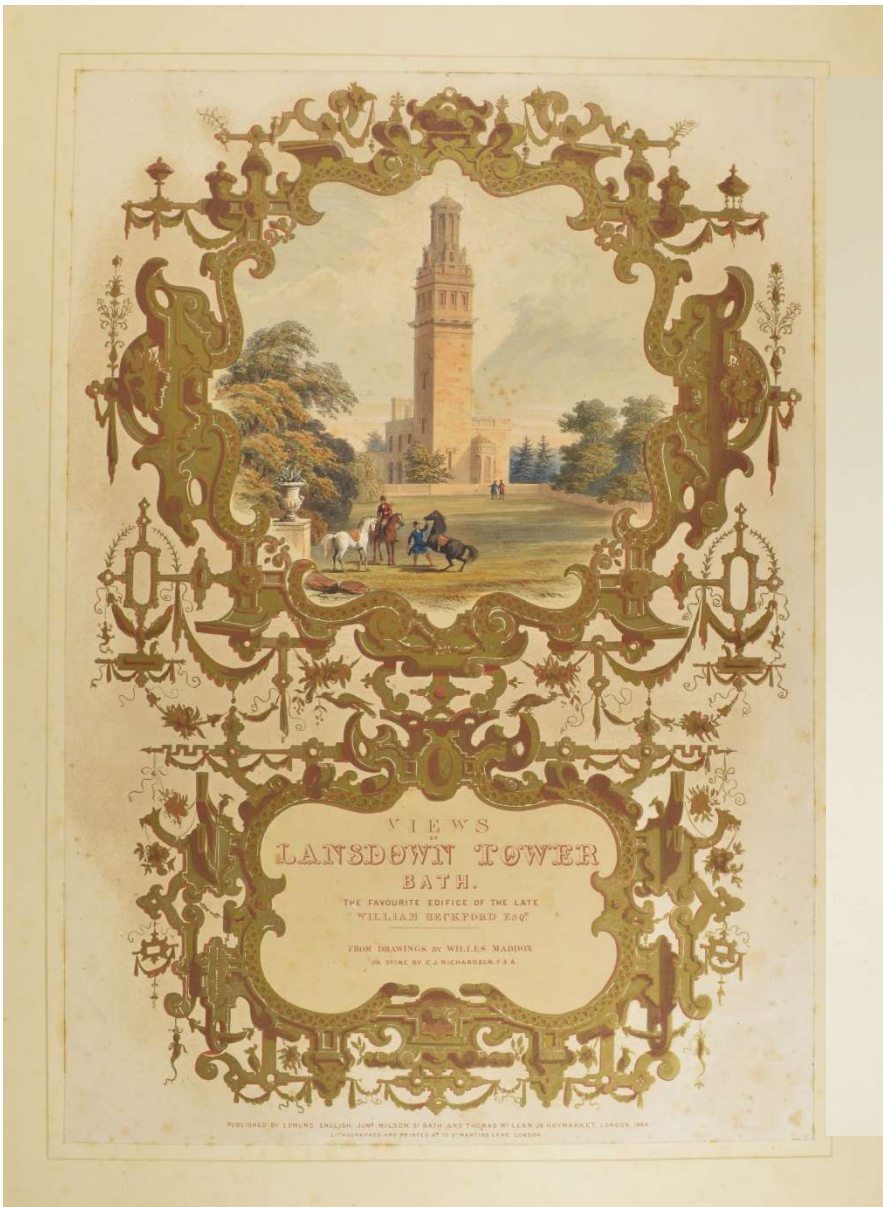
WITH FINE HAND-COLOURED PLATES

136. **WILTSHIRE. MADDOX (Willes)** Views of Lansdown Tower, Bath. The Favourite Edifice of the Late William Beckford Esqr. From Drawings by Willes Maddox, on Stone by C. J. Richardson F.S.A. *Bath: Published by Edmund English Junr., 1844.* **£1,695.00**

First edition, Elephant folio (630 x 445 mm), coloured lithographed title page with hand-coloured vignette, [6], 10pp., with a list of subscribers, prefatory material signed by Edmund Francis English, 13 hand-coloured lithographed plates on 12 card leaves by C. J. Richardson after Maddox and 6 tinted lithographed illustrations in the text, tipped-in 'Notes' slip, all but first plate with tissue-guard, two leaves with light silverfish damage to margins, mainly affecting dedication leaf and first plate lower blank fore-edge, occasional light soiling, some text leaves toned, spotting, mainly to title and text, 19th century morocco, with original gilt lettering inlaid to upper cover, light staining, worn at foot, but still a very good copy with plates bright and clean.

"This great work contains magnificent, coloured lithographs and is a tribute to the grand tower the Beckford built. It was completed in 1827 to the designs of Henry Goodridge for William Beckford as a library and retreat although he died aged 84 in May of the year 1844, this was published 1844. The books and the greatest treasures it contained were removed to Hamilton Palace the home of Beckford's daughter the Duchess of Hamilton. The building was sold by the Duchess and then bought back, and Beckford was buried in the garden but only after land was given adjoining the tower for a cemetery. There is a note in the book saying that the tomb was removed as they were unable to consecrate the ground. This was consecrated when the Duchess repurchased the Tower."—Cooper.

Holmes, p.157; Cooper II, pp.160-61; Abbey, *Scenery* 420.



137. **WILTSHIRE. [NEALE (J. P.)]** Fonthill Abbey, Wiltshire; the Seat of John Farquhar, Esq. [*London: Sherwood, Jones and Co., 1824.*]
£65.00

8vo (230 x 145 mm), 16pp., caption-title, 5 engraved plates, title vignette, recent marbled endpapers and red cloth, title in gilt on upper cover.

A separately printed issue from the first monthly part of the first volume of the second series of J. P. Neale's *Views of the Seats of Noblemen and Gentlemen*, published in parts between 1824 and 1829. This extract, similar to the work on Blenheim and Thomas Hope's house at The Deepdene, Surrey, was plainly intended for sale separately, all of which have numbered pages. Only these three from the numerous country houses featured in Neale's *Seats* were distinguished by separate publications of this nature. Some copies have a separately title leaf printed, as well as a dedication leaf, but not present here.

Holmes, p.104; Cooper II, p.98.

138. **WILTSHIRE. POCOCK (Mrs. Rose R.)** The Longleat Views [Title from upper cover]. *Bristol: A. Pocock Lith. [c.1840s].*
£795.00

Large oblong folio (585 x 410 mm), lithographed throughout, dedication leaf, 6 tinted lithographed plates with tissue guards, each accompanied by a leaf of descriptive text, some light foxing as usual but mostly affecting text leaves, last few leaves frayed at edges, original roan-backed embossed limp cloth, titled in gilt within ornamental wreath on upper cover, preserved in modern slip-case.

A scarce volume of lithographic views of this famous Wiltshire Country House, the seat of the Marquess of Bath, and the only illustrated significant publication devoted to the House. The six plates provide large and attractive illustrations of the Porters Lodge leading from Horningsham, The Garden Front of Longleat House, The Grand Entrance Hall, A View from Heavens Gate, Sheerwater Lake & Boat House and Horningsham Church and Village. The final plate includes the figure of a lady sketching the view - perhaps a self-portrait of Mrs. Pocock. It appears that this is a husband and wife combined effort, Mrs. Rose R. Pocock being the artist and A. Pocock the Bristol lithographic printer.

Holmes, p.167; Cooper II, pp.167-68; Abbey, *Scenery* 422.



St. James's Palace of England

THE
LONGLEAT VIEWS
BY M^{RS} R. DOUGLASS
A. DODD, LONDON

139. **WILTSHIRE. PUGIN (A. W.) & WALKER (Thomas Larkins)** The History and Antiquities of the Manor House and Church at Great Chalfield, Wiltshire; the Property of Sir Harry Burrard Neale, illustrated by twenty-eight plates of plans, elevations, sections, parts at large, and perspective view; from sketches and admeasurements taken in 1836; forming part II. of "Examples of Gothic Architecture," third series. *London: Printed for the Author, 1837.* **£75.00**

First edition, 4to (300 x 238 mm), [6], 26, [4]pp., 28 plates, some light foxing, front inner hinge shaken, orig. cloth-backed printed boards, a couple of small nicks to spine.

Part two of the 3rd series of Pugin's Gothic Architecture, although complete in itself.

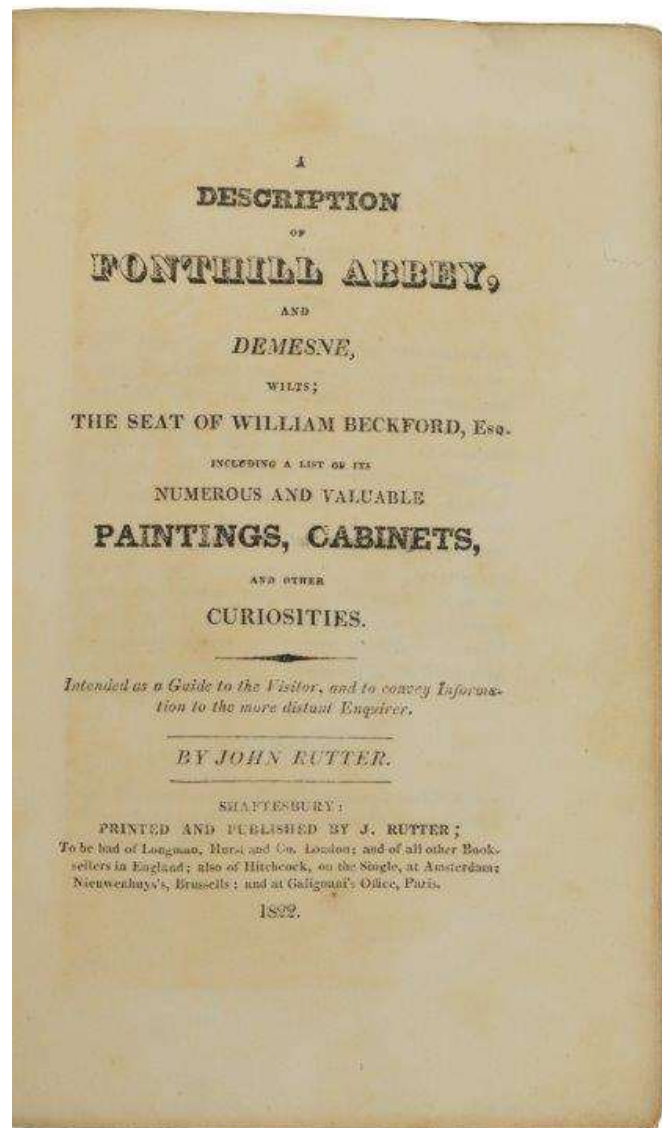
Holmes, p.114.

140. **WILTSHIRE. PUGIN (A. W.) & WALKER (Thomas Larkins)** The History and Antiquities of the Manor House, at South Wraxhall, and the Church of Saint Peter, at Biddestone, Wiltshire; the former Property Walter Long, illustrated by twenty-two plates of plans, elevations, sections, parts at large, and perspective views, together with woodcuts; ; from sketches and admeasurements taken in 1837; forming part III. of "Examples of Gothic Architecture," third series. *London: Printed for the Author, 1838.* **£85.00**

First edition, 4to (300 x 238 mm), [6], 28, [4]pp., 22 plates, some light foxing, orig. cloth-backed printed boards, a couple of small nicks to spine.

Part three of the 3rd series of Pugin's Gothic Architecture, although complete in itself.

Holmes, p.233.

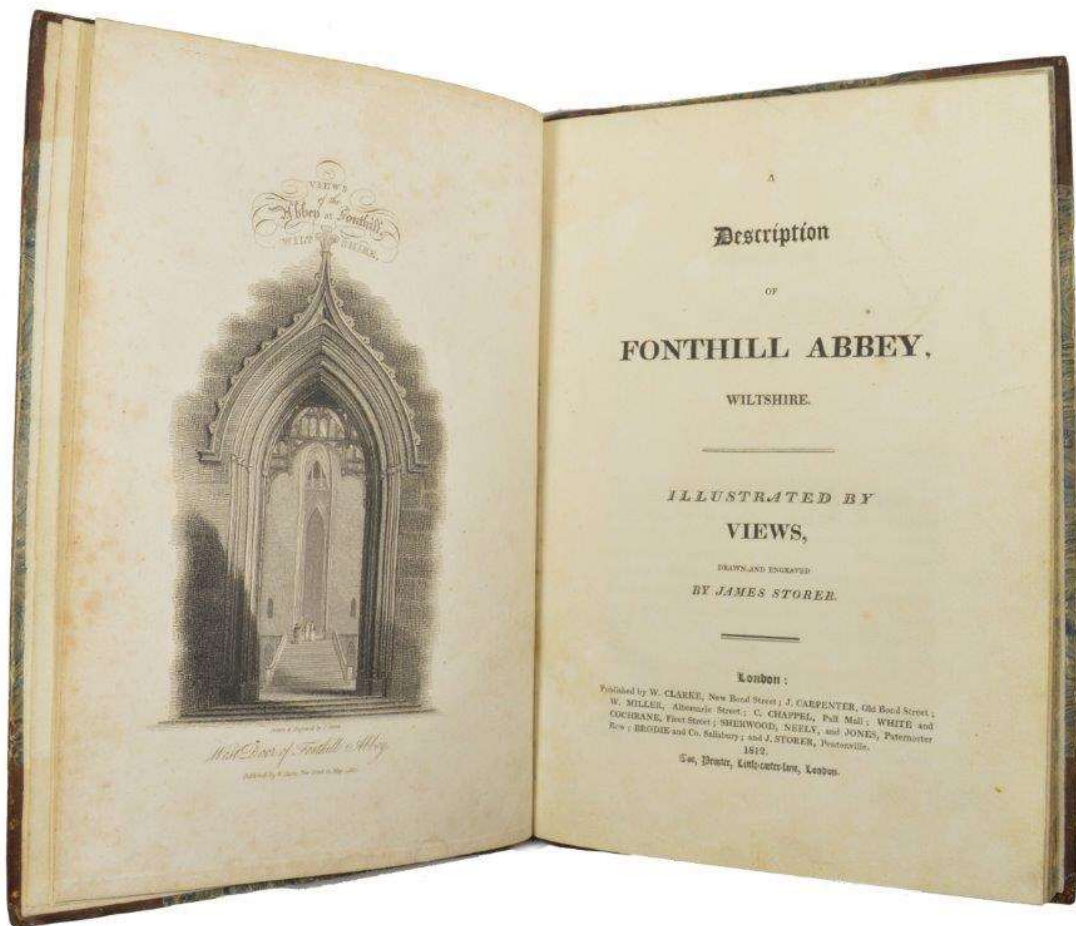


141. **WILTSHIRE. RUTTER (John)** A Description of Fonthill Abbey, and Demesne, Wilts; the seat of William Beckford, Esq., Including a List of its numerous and valuable Paintings, Cabinets, and other Curiosities. Intended as a Guide to the Visitor, and to convey Information to the more distant Enquirer. *Shaftesbury: Printed and Published by John Rutter, 1822. £345.00*

First edition 8vo (210 x 133 mm), [4], 66pp., frontispiece engraved view of Fonthill, original printed wrappers, a little stained, stitched issued, nicely preserved in a morocco-backed marbled slip-case.

The rare first edition of Rutter's guide to Fonthill which was hastily rushed in production when the great sale of the contents was first announced. Five more editions were to follow in the year, testifying to the intense public interest in Fonthill and Beckford's collections whipped up by the prospective sale of Fonthill's contents at auction.

Holmes, p.104; Cooper II, PP.95-96.



142. **WILTSHIRE. STORER (James)** *A Description of Fonthill Abbey, Wiltshire. Illustrated by Views, Drawn and Engraved by James Storer. London: Printed by W. Clarke, 1812. £375.00*

First edition, small 4to (235 x 160 mm), [2], 24pp., engraved frontispiece and 6 further engraved plates, contemporary half calf, marbled boards, rebacked.

Provenance: Bookplate of Sir Philip Magnus, Bt.

This was the first monograph on Fonthill Abbey, published before the completion of the building in 1813. Its interest lies partly in Storer's illustrations, neatly drawn and skilfully engraved, and partly the text, which although brief was written a decade earlier than the better known descriptions of the house by Rutter and by John Britton, and which thus records the building and its interior when newly completed for William Beckford. There are seven unnumbered plates. The frontispiece is headed 'Views of the Abbey at Fonthill, Wiltshire.' and depicts the west door of the Abbey; the other plates give general views (from Beacon and American plantation), a view of the north end of the Gallery, and views of the south-west, south and south-east.

Holmes, p.104; Cooper II, pp. 92-93; BAL Cat. 3170.

143. **WILTSHIRE. WILKINSON (Captain Nevile R.)** *Wilton House Guide: A Handbook for Visitors. London: Printed at the Chiswick Press, 1908. £35.00*

Small 8vo (184 x 120 mm), 88, [4]pp., 6 plates, orig. blue cloth with gilt device to upper board, a nice copy.

A condensed version, presumably produced for house guests, of a much more comprehensive catalogue and history issued by the author in 2 volumes the previous year.

PRIVATELY PRINTED ON A PRIVATE PRESS

144. **WILTSHIRE. WITHAM (Rev. George) Editor and printer.** The History of Lacock Abbey or Locus Beatae Mariae from Dugdale Stevens &c. With Additions on the Present State of the Abbey. *Lacock by the Rev G. Witham, 1806.*
£1,250.00

First edition, small 4to (188 x 126 mm), [4], v, [1], 44pp., recent red half morocco, spine gilt. The History of Lacock Abbey, also known as Locus Beatae Mariae, is a book written by George Witham in 1806. The book provides a comprehensive account of the history of Lacock Abbey, a medieval nunnery located in Wiltshire, England. Witham explores the origins of the abbey, its founding by Ela, Countess of Salisbury, and its subsequent history under different abbesses. The book also covers the dissolution of the monasteries under Henry VIII and the subsequent use of the abbey as a private residence. Witham provides detailed descriptions of the architecture and layout of the abbey, as well as the daily life of the nuns who lived there.

An extremely rare book which was privately printed by the Rev. George Witham at his press at Lacock. The text is mostly taken from Dugdale and Stevens with a few additions by the printer. In his dedication to the Countess Dowager of Shrewsbury he mentions, "the vacant Hours pleasingly employed in preparing and printing the Work, (my first Performance)". A footnote by J. G. Nichols in his *Annals and Antiquities of Lacock Abbey, 1835*, on p.349 states: "a literary curiosity of great rarity". The Rev. George Witham was chaplain to the Countess of Shrewsbury at Lacock Abbey at it seems this is the only book to have been printed by him at Lacock.

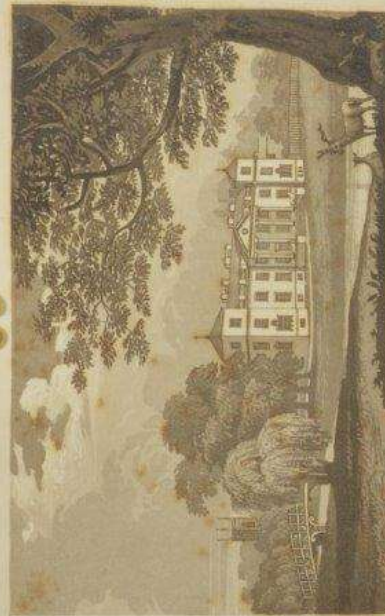
Lacock Abbey, also known as Locus Beatae Mariae, has a rich and varied history spanning over 800 years. Founded in the early 13th century by Ela, Countess of Salisbury, it originally served as a nunnery for Augustinian canonesses. The abbey was dedicated to St. Mary and was a place of religious devotion and community life.

During the Protestant Reformation in the 16th century, Lacock Abbey was dissolved and transformed into a private residence. It was acquired by Sir William Sharington, who converted it into a Tudor family home¹. The abbey continued to evolve with each subsequent owner, reflecting the architectural and cultural changes of the times.

One of the most notable events in its history occurred in 1835 when William Henry Fox Talbot, a pioneer of photography, captured the first photographic negative at Lacock Abbey. This groundbreaking achievement marked the abbey as a significant site in the history of photography.

Listed by Harris in his *Country House Index*; Not in Holmes or Cooper.

THE
HISTORY
OF
LACOCK ABBEY
OR
LOCUS BEATÆ MARIE
from
DUGDALE STEVENS &c.
*With Additions on the
Present State of the Abbey.*
Lacock by the Rev G Witham 1806.



VIEW OF THE MANSION.

AN
HISTORICAL AND DESCRIPTIVE
ACCOUNT OF
CROOME D'ABITOT,
THE SEAT OF
THE RIGHT HON. THE EARL OF COVENTRY;
WITH
BIOGRAPHICAL NOTICES OF THE COVENTRY FAMILY:
TO WHICH ARE ANNEXED AN
HORTUS CROOMENSIS,
AND
Observations
ON THE PROPAGATION OF EXOTICS.

By **WILLIAM DEAN,**
Botanic Gardener to the Right Hon. the Earl of Coventry.

*Agro bene culto, et diligenter consono,
nil potest esse, nec usu uberius, nec specie ornatus.*
Cic.

Nottingham:
PRINTED AND PUBLISHED FOR THE AUTHOR,
BY T. EATON, COLLEGE STREET.

1824.

145. **WORCESTERSHIRE. DEAN (William)** An Historical and Descriptive Account of Croome d'Abitot, the seat of the Right Hon. the Earl of Coventry; with Biographical Notices of the Coventry Family: to which are Annexed an Hortus Croomensis, and Observations on the Propagation of Exotics. *Worcester: Printed and Published for the Author, by T. Eaton, 1824.* **£395.00**

First edition, 8vo (194 x 119 mm), [4], [12, list of subscribers], [5]-93, [1], 161, [1]pp., aquatint frontispiece of Croome Court and 3 further aquatint plates of garden buildings, contemporary half calf over marbled boards, rubbed, rebacked, the plates are offset otherwise a very clean copy.

Croome Court was 'Capability' Brown's first complete landscape, making his reputation and establishing a new style of garden design which became universally adopted over the next 50 years. The elegant Croome Park buildings and other structures are mostly by Robert Adam and James Wyatt. This rare guide book to the house and gardens, by the head gardener at Croome, also contains a 161 page catalogue of plants grown at Croome.

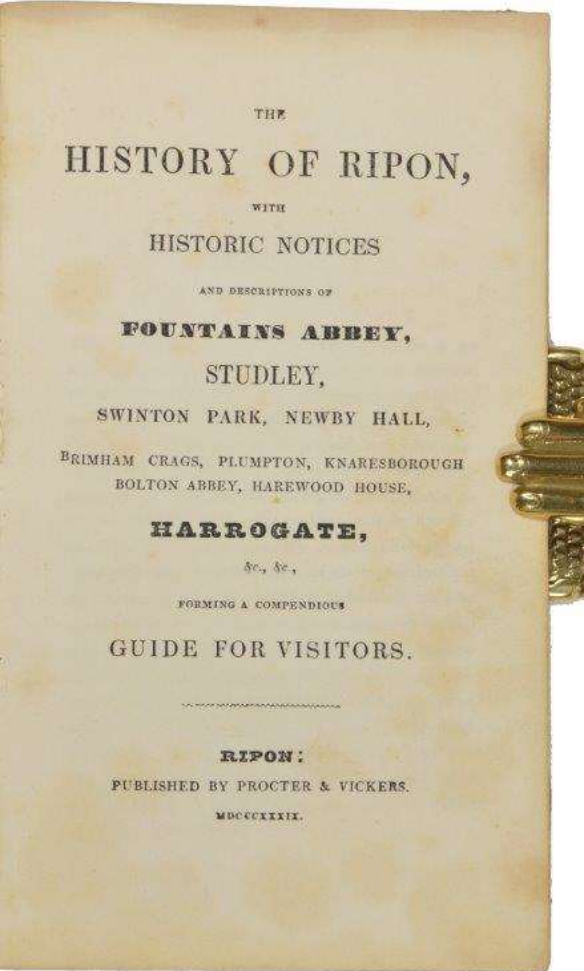
Holmes, p.82; Cooper II, pp.80-1.

LARGE PAPER COPY

146. **WORCESTERSHIRE. NIVEN (William)** Illustrations of Old Worcestershire Houses. *London: Printed for the Author at the Chiswick Press, 1878.* **£195.00**

First edition, folio (375 x 270 mm), xii, 48pp., with a list of subscribers at the end, large paper copy, title with vignette, 20 tissue garded copper etchings by the author with descriptive notes, original brown publishers cloth, gilt.

Holmes, p.8; Cooper I, 66.

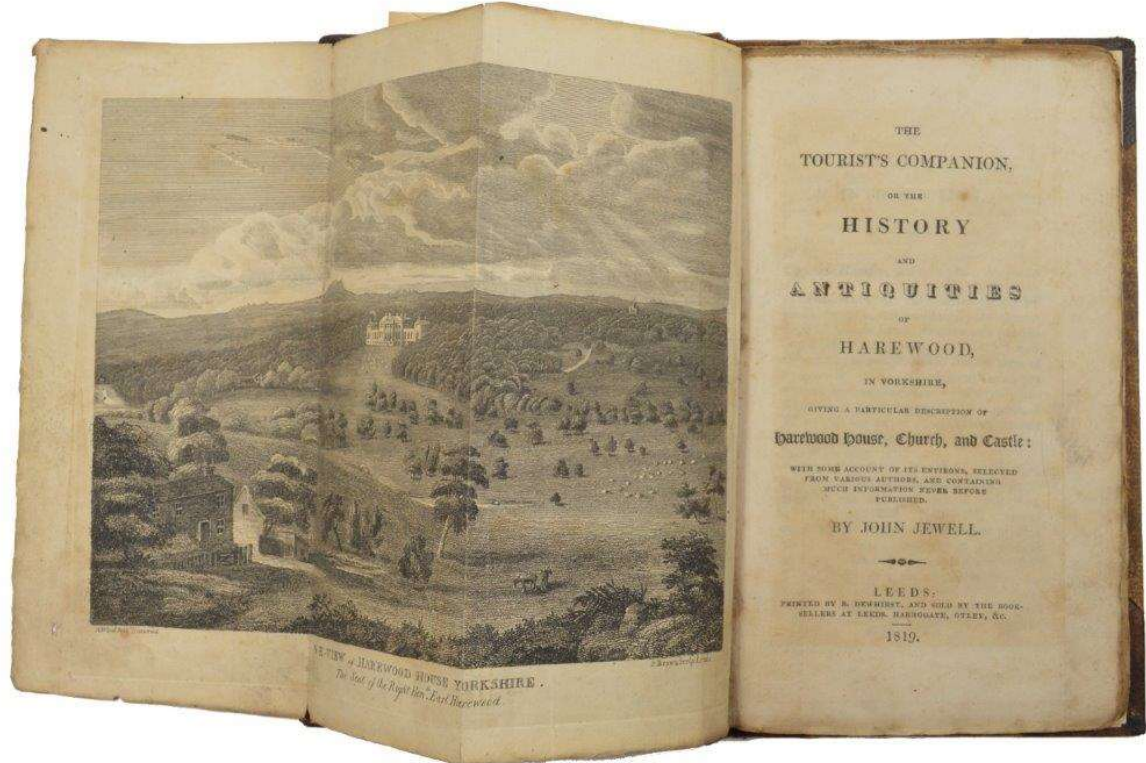


147. **YORKSHIRE.** The History of Ripon, with Historic Notices and Descriptions of Fountains Abbey, Studley, Swinton Park, Newby Hall, Brimham Crags, Plumpton, Knaresbrough, Bolton Abbey, Harewood House, Harrogate, &c., &c., forming a compendious guide for visitors. *Ripon: Published by Proctor & Vickers, 1839. £75.00*

First edition, tall 12mo (175 x 105 mm), iv, 176p., 2 engraved plates on yellow tinted paper, 1 folding plan, text illustrs., contemporary red morocco, rubbed.

148. **YORKSHIRE. JEWELL (John)** The Tourist's Companion, or the History and Antiquities of Harewood, in Yorkshire, giving a particular Description of Harewood House, Church and Castle... *Leeds: Printed by B. Dewhurst, 1819. £85.00*

First edition, tall 12mo (186 x 111 mm), vi, [7]-85, [1]pp., without half-title, text a little browned, folding engraved frontispiece of Harewood House, later half calf, slightly rubbed, untrimmed.



The scarce first edition, but without the folding pedigree of Lascelles family.

Not in Holmes; Cooper II, pp.126-7 (second edition of 1822).